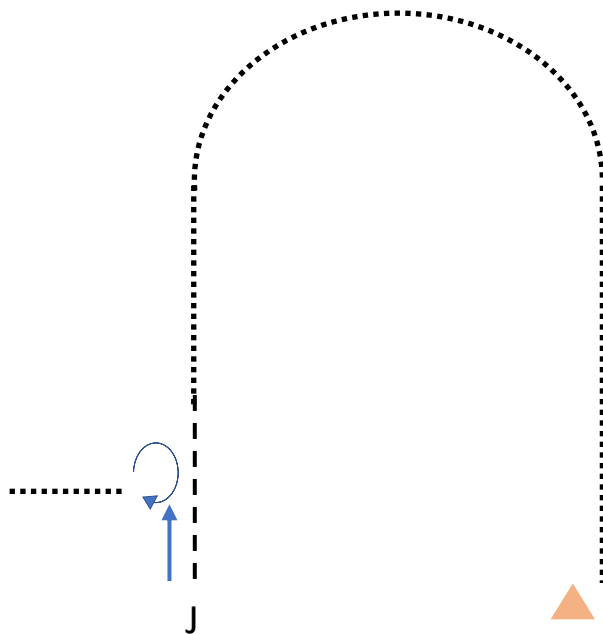
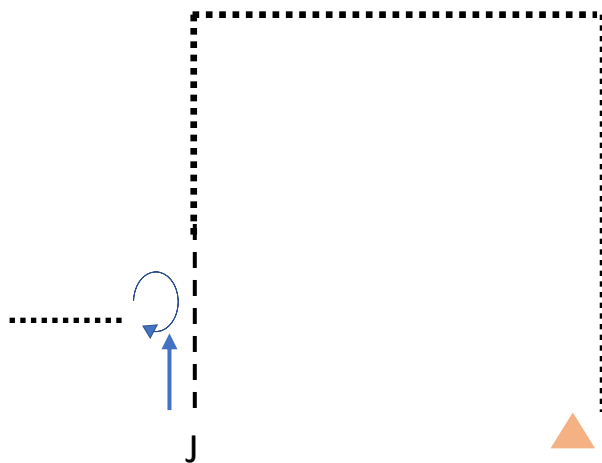


Showmanship  
Small Fry Showmanship  
Friday, April 7th



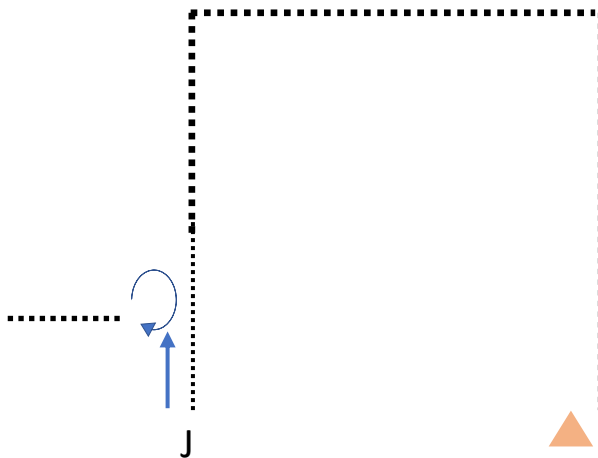
1. Trot in a straight line before trotting a  $\frac{1}{2}$  circle to the left
2. When  $\frac{1}{2}$  way to Judge, break to a walk and continue to Judge
3. Set Up
4. Perform a  $\frac{1}{2}$  Turn and walk a few steps before turning a corner to the left
5. Continue walking ..... pattern is complete

Showmanship  
L1 Amateur, Amateur Select, Youth  
Friday, April 7th



1. Trot in a straight line and thru 2 square corners
2.  $\frac{1}{2}$  way to Judge slow to a walk and continue to Judge
3. Set Up
4. Back at least 10 feet
5. Perform  $1 \frac{1}{4}$  turns and trot away

Showmanship  
Amateur, Amateur Select, Youth L2/L3  
Friday, April 7th



1. Trot in a straight line before turning a square corner
2. After corner, Extend the Trot and continue thru a second square corner
3.  $\frac{1}{2}$  way to Judge, show to walk and continue to Judge
4. Set Up
5. Back at least 10 feet
6. Perform  $1 \frac{1}{4}$  turns and trot away